

# Gill Raker Gazette

The Newsletter of the Idaho Chapter of  
the American Fisheries Society

Volume 31, Issue 1

January 2012

Editor: Joe DuPont

## 2012 ANNUAL MEETING

PRESIDENT'S MESSAGE,

### Let's Get Ready to Rumble!! - ICAFS Annual Meeting is Upon Us



I cannot wait!!!!!! Our annual Idaho Chapter American Fisheries Society (ICAFS) meeting is upon us. Time to reconnect and make new acquaintances with students, professionals, colleagues, private firms, retirees and on and on. I have been a member of AFS since the late 90s and I can honestly say that I have not missed an annual meeting. As you can tell I am an enormous supporter of ICAFS, evidenced by my involvement in the chapter over the years as student, professional member, speaker, members of various committees, and now this is my final Presidents Message as a member of EXCOM. I can honestly say that what I have received in the way of networking, long lasting relationships, work prospects, work efficiencies, and on and on have far exceeded the amount of energy I have put in. You may say that this is kind of cheesy, but what the heck, getting together each year gives fishery students and professionals a vehicle to share their unique and exciting research and ideas, and I dare you to come to this meeting and not learn something. So let's take off our respective agency or whatever hats we wear, and come and enjoy ourselves in all facets of fisheries happening around us, in this wonderful tradition of our annual meeting.

Each year the President Elect is in charge of the meeting and Dmitri Videgar has put together an outstanding meeting "Non native species: managing the uncertainties". He has put together a great Plenary session and that will be followed up

with numerous talks and posters from all of you, there will surely be something to peak everyone's interest. If that isn't enough for you then come a day early and attend the all day workshop put on by the Anadromous Committee "Fish without borders" with numerous distinguished guest speakers talking about climatology, ocean productivity, estuary survival ocean survival, and adult return survival estimates to name a few. Also, don't forget about the student social, the committee breakouts, spawning run, vendor booths, poster session, and last but not least the world famous ICAFS banquet social and fundraising event. I know every year my wallet gets stripped clean, but I always feel great about all the wonderful things ICAFS is doing with my donation. So make sure to register by February 6, 2012 to get the early registration price break.

Thanks to all of the committees and EXCOM for all of their hard work over the past year and thanks to all of the volunteers that will undoubtedly make the 2012 annual meeting a great success. Also, thanks for letting me serve this Chapter and I encourage all of you to join an ICAFS committee, run for EXCOM, donate your time as you can, and I guarantee your gains will far outweigh our inputs.

Keep up all your great work and see all of YOU at the meeting in March

Jason Vogel

INSIDE THIS ISSUE	
President's Message	1
Annual meeting and workshop information	2-11
Officer Nominations	12-14
Student Corner	15
Chapter Officers	16



# 2012 Annual Meeting!

## Non-Native Species:



## Managing the Uncertainties

If you haven't registered for this great annual event, do so now at [www.idahoafs.org](http://www.idahoafs.org)  
Those who register after February 6 will be required to pay an additional \$50

**Date and Location:** March 7-9, 2012. Coeur d'Alene Resort, 115 South Second Street, Coeur d'Alene, Idaho (208) 765-4000

A block of rooms will be held until Feb 6 so make your reservations soon.  
Please indicate you are with AFS when making your reservations!!

### Conference Highlights to look forward to:

- New perspectives regarding invasion ecology, diversity of talks and poster topics
- Annual Spawning Run
- Student mixer
- Better than ever Banquet night, Fundraiser and FISH Jam!



## 2012 Workshop: Fish Without Borders

Tuesday, March 6<sup>th</sup>, 2012 at the Coeur d'Alene Resort - Only \$30. You can register for this workshop while you sign up for the annual meeting at [www.idaho.afs.org](http://www.idaho.afs.org) . For those who wait and pay at the door, no meals will be provided.

### WORKSHOP AGENDA

- 9:00 – 9:10           **GENERAL HOUSE KEEPING / WELCOME**
- 9:15 – 9:35           **Approaches for assessing hydrosystem effects on Snake River salmon and steelhead survival rates under varying marine conditions**  
Charlie Petrosky, Idaho Department of Fish & Game, Boise, ID
- 9:35 – 10:00       **The relative influence of ocean and seaward migration conditions on survival rates for stream-type Chinook salmon and steelhead in the Snake River and John Day rivers**  
Howard Schaller, US Fish and Wildlife Service, Vancouver, WA
- 10:00 – 10:20       **Assessing freshwater and marine influences on life-stage-specific survival rates of Snake River Chinook salmon and steelhead**  
Steven Haeseker, US Fish and Wildlife Service, Vancouver, WA
- 10:20 – 10:40       **BREAK**
- 10:45 – 11:05       **Distribution and abundance of juvenile Snake River fall Chinook salmon off the Oregon and Washington coast**  
David Teel, NOAA Fisheries, Manchester, WA
- 11:05 – 11:40       **Early marine residence of interior Columbia River Basin Chinook salmon (*Oncorhynchus tshawytscha*): a comparison across stocks and life histories**  
Jessica Miller, Oregon State University, Newport, OR
- 11:40 – 12:00       **Ocean distribution and consequent factors influencing marine survival of Redfish Lake sockeye salmon**  
Strahan Tucker, Department of Fisheries & Oceans, Nanaimo, BC, Canada
- 12:00 – 1:25       **LUNCH provided**
- 1:30 – 1:50           **Ocean growth and survival of Snake River Spring Chinook Salmon**  
Brian Beckman, NOAA Fisheries, Seattle, WA
- 1:50 – 2:10           **Forecasting returns of coho and Chinook salmon: presentation of a mechanism that links the PDO with ocean circulation, ecosystem structure and salmon returns in the coastal northern California Current**  
William Peterson, NOAA-Fisheries, Newport, OR
- 2:10 – 2:30           **Climate impacts on Columbia and Snake River salmon habitat in the Northeast Pacific**  
Dr. Nathan Mantua, University of Washington, Seattle, WA
- 2:30 – 3:05           **Interplay of growth and size-selective mortality during critical life stages of salmon and steelhead: The importance of connectivity among life stages**  
Dr. David Beauchamp, University of Washington, Seattle, WA
- 3:05 – 3:25           **BREAK**
- 3:30 – 3:55           **Testing the effects of the Federal Columbia River Power System on Snake River Chinook salmon survival in the early marine period**  
Erin Rechisky, Kintama Research Services Ltd., Nanaimo, BC, Canada
- 3:55 – 4:20           **Salmon in Hot Water—Should Current Conservation Approaches be Revisited?**  
**David Welch**, Kintama Research Services Ltd., Nanaimo, BC, Canada
- 4:20 – 4:40           **A Study to Evaluate Survival of Adult Spring/Summer Chinook Salmon Migrating from the Mouth of the Columbia River to Bonneville Dam**  
Michelle Wargo-Rub, NOAA Fisheries, Seattle, WA





## Wednesday Evening, March 7, Events

- 5:30-6:15      **MENTORING SOCIAL** (Eagles Lodge 209 E Sherman Ave. Coeur d'Alene)  
 6:30- 7:??    **STUDENT MIXER** (Eagles Lodge 209 E Sherman Ave. Coeur d'Alene)  
 8:30-11:00    **AFS Fish Jam Practice** (location TBA)

## Thursday, March 8 Meeting Agenda (concurrent sessions)

6:00-7:00 AM    **ICAFS Spawning Run – Location: Meet in Ballroom Lobby**    Sponsored by BIOMARK

	<b>Session 2-A: Anadromous Fish Ecology and management</b> Moderator: TBA Location: Bay 1A	<b>Session 2-B: Native fish ecology and habitat</b> Moderator: Corey Lyman Location: Bay 1B
8:00-8:10	Announcement and introduction to Session	Announcement and introduction to Session
8:10-8:30	<b>A Critical Assessment of the Ecological Assumptions Underpinning Compensatory Mitigation of Salmon Derived Nutrients</b> Scott F. Collins, Idaho State University	<b>Evaluation of Artificial Markers for Monitoring Releases of Burbot (<i>Lota lota</i>) in the Kootenai River</b> Neil Ashton, University of Idaho
8:30-8:50	<b>Nutrient Flux by Chinook salmon in Idaho streams: The Ins and Outs, and Implications for Management</b> Andre E. Kohler, Shoshone-Bannock Tribes	<b>Deep Water Spawning Observations and Effective Incubation Habitat Modeling for Redband Trout, Spokane River, WA</b> Tim Vore, Avista Corporation
8:50-9:10	<b>Supportive Breeding Boosts Natural Population Abundance Without Inflicting Negative Fitness Impacts on Wild Chinook Salmon in Johnson Creek, Idaho</b> Maureen A. Hess, Columbia River Inter-Tribal Fish Commission	<b>A Long-Term Comparison of Yellowstone Cutthroat Trout Abundance in Idaho</b> Steven Elle, Idaho Department of Fish and Game
9:10-9:30	<b>Comparisons of Adult Demographics for a Supplemented Summer Chinook Population: a Companion to Parentage Assignment</b> Craig D. Rabe, Nez Perce Tribe DFRM	<b>Update on the Status of Pygmy Whitefish in Idaho</b> Melo A. Maiolie, Idaho Department of Fish and Game
9:30-9:50	<b>Thermal Shift in Maximum Consumption Helps Explain Bioenergetics and Growth by Subyearling Fall Chinook salmon</b> John M. Plumb, University of Idaho	<b>How Do Stream Food Webs Respond to the Addition of Salmon Carcass Analogs in Idaho Streams?</b> David P. Richardson, Shoshone-Bannock Tribes
9:50-10:15	<b>Break</b>	
	<b>Session 2-A: Chinook salmon Ecology and management</b> Moderator: TBA Location: Bay 1A	<b>Session 2-B: Native fish ecology and management</b> Moderator: TBA Location: Bay 1B
10:15-10:35	<b>Seasonal Growth Rates, Smolting and Early Male Maturation in Hatchery Chinook Salmon Programs in the Columbia River Basin</b> Brian Beckman, NOAA Fisheries	<b>Influence of Barriers to Movement on the Population Genetic Structure of Westslope Cutthroat Trout</b> Sammy L. Matsaw Jr., Idaho State University
10:35-10:55	<b>Characterizing Juvenile Chinook salmon Life History Variability in the Willamette Valley Using Otoliths and Scales</b> Samuel Bourret, Department of Fish and Wildlife Resources	<b>Distribution and Genetic Structure of a Needle in the Fragmented Haystack: The Tale of a Rare High-Desert Minnow, the Northern Leatherside Chub</b> Jason Blakney, Idaho State University
10:55-11:15	<b>Trends in Length at Age and Age at Maturity of Two Stocks of Hatchery Chinook Salmon and Adjacent Natural Populations in Idaho</b> John Cassinelli, Idaho Department of Fish and Game	<b>Effects of Wildfire and Debris Flows on Downstream Insect Fluxes and Consequences for Drift – Feeding Fish in Recipient Confluence Habitats</b> Hannah E. Harris, Idaho State University



11:15-11:35	<b>A Life Cycle Modeling Approach to Life History Evolution in a Spatially Structured Population of Fall Chinook Salmon</b> Jens Hegg, University of Idaho	<b>Prioritizing Restoration Activities in Two Watersheds of the Coeur d'Alene Subbasin to Improve Habitat for Westslope Cutthroat Trout</b> Stephanie Hallock, Coeur d'Alene Tribe Fisheries Program
11:35-11:55	<b>Effect of Creel Survey Design and Catch Rate Estimation on Total Catch Estimates in Chinook Salmon Fisheries in Idaho</b> Joshua L. McCormick, University of Idaho	<b>A Watershed Scale Test of Optimal Foraging in a Variable Environment</b> Brian Kennedy, University of Idaho
11:55-2:10	<b>Business Luncheon (Bay 2)</b>	
	<b>Session 3A: Steelhead Ecology and management</b> <b>Moderator: TBA</b> <i>Location: Bay 1A</i>	<b>Session 3B: Management, Education, and Methods Application</b> <b>Moderator: TBA</b> <i>Location: Bay 1B</i>
2:10-2:15	Introduction to Session	Introduction to Session
2:15-2:35	<b>Comparison of Juvenile Life History Strategies Exhibited by Steelhead within the Potlatch River Drainage, Idaho</b> Brett J. Bowersox, Idaho Department of Fish and Game	<b>Lifecycle Assessment Integrating Two or More Species to Improve Sustainability in Marine Aquaculture</b> Lubia Cajas Cano, Department of Fish and Wildlife Resources
2:35-2:55	<b>Origin of Hatchery Steelhead Kelts Determined by Parentage-based Tagging (PBT)</b> Craig A. Steele, Pacific States Marine Fisheries Commission (PSMFC)/Idaho Department of Fish and Game	<b>Effects of Initial Feed Timing on Triploid Rainbow Trout Fry at Grace Fish Hatchery</b> Beau J. Gunter, Idaho Department of Fish and Game
2:55-3:15	<b>The Origin and Distribution of Kelt Steelhead Trout in the Snake River, ID: Genetic Stock ID at Lower Granite Dam</b> Andrew Matala, Columbia River Inter-Tribal Fish Commission	<b>Hydrologic regime influence on age-1 walleye recruitment in Lake Roosevelt, Columbia River</b> Benjamin K. Cross, Washington State University
3:15-3:35	<b>Effects of Body Mass, Water Temperature, and Consumption Rates on Juvenile Steelhead (<i>Oncorhynchus mykiss</i>) Growth in a Hydrologically Altered Watershed</b> Knut Marius Myrvold, University of Idaho	<b>Seven Years of Nutrient Addition to Restore Fisheries in the Kootenai River, Idaho</b> Cathy Gidley, Idaho Department of Fish and Game
3:35-3:55	<b>A Comparison of the Nutritional and Energetic Status of Kelts From the Snake River and Coastal Situk River, AK Using Blood Plasma Metrics</b> Zachary L. Penney, University of Idaho	<b>Databasing Data to Improve Understanding of Fish Ecology and Management Uncertainties</b> Alexander K. Fremier, University of Idaho
3:55-4:15	<b>Migration and Physiology of Clearwater River Steelhead Kelts</b> Bryan Jones, University of Idaho	<b>Suppression of Cannibalism During Larviculture of Burbot (<i>Lota lota maculosa</i>) Through Size Grading</b> Josh Egan, University of Idaho
4:15-4:35	<b>The Role of <i>rpoB</i> Mutation in Rifampicin Attenuation of <i>Flavobacterium psychrophilum</i></b> Karol Gliniewicz, Washington State University	<b>Species-Wide Genetic Analysis of Westslope Cutthroat Trout</b> Daniel M. Bingham, Rocky Mountain Research Station
4:35-4:55	<b>Using Multiple Sonar Deployments to Improve Run-Size Estimates of Anadromous Fishes</b> Jacob B. Hughes, North Carolina State University	<b>Resolving Cottid Confusion: Phylogeography of Sculpins in the Upper Columbia and Missouri River Basins</b> Michael K. Young, Rocky Mountain Research Station
5:15-6:15	<b>POSTER SESSION</b> Location: Casco Bay/Kidd Island - See next page for posters	

6:30- ????

**EVENING SOCIAL AND AUCTION!**

Location: Bay 1 and 2

Auction – Bring your money and win/buy some great stuff and support the Chapter!!

Entertainment!!! – AFS Fish Jam – Enjoy Talent from Within the Chapter – All are Welcome to Participate, Bring Your Voices and/or Instruments!!



**POSTER SESSION 5:15—6:15 PM Thursday, March 8****Effects of winter ice dynamics on periphyton and seston in a central Idaho river ecosystem**

Ryan Blackadar, Idaho State University

**The Snake River Sockeye Captive Broodstock Program: A Review of the First Twenty Years and What's Migrating Upstream in the Future**

Travis Brown, Idaho Fish and Game

**Analysis of Survival and Downstream Migration Characteristics of Steelhead Kelts Using Instream PIT-Tag Arrays In the Potlatch River Drainage, ID**

Nicolas Davids, Pacific States Marine Fisheries Commission

**Suitability of Habitat and Water Quality in the Meadow Reach of Boulder Creek for Rainbow Trout**Deirdre Bingaman, Donnelly Elementary School 5<sup>th</sup> Grade and McCall Outdoor Science School**Marine Mammal Predation in the Lower Columbia River**

Douglas Hatch, Columbia River Inter-Tribal Fish Commission

**Evaluating Tiger Muskellunge to Remove Brook Trout from Idaho Alpine Lakes**

Eric Herrera, Idaho Department of Fish and Game

**Genetic Estimation of Stock Abundance and Run-timing of Interior Columbia River Steelhead Passing Bonneville Dam**

Jon E. Hess, Columbia River Inter-Tribal Fish Commission

**Prevalence of otolith aberrancy in hatchery-reared juvenile steelhead trout from the Snake River basin**

Heath Hewett, University of Idaho

**Assimilation Efficiency of Utah Sucker and Speckled Dace Feeding on Chironomidae Larvae at Different Temperatures**

Nichelle Heyrend, Idaho State University

**Genetic Analysis of Redband Trout in the Malad River, ID**

Tabitha Holden, Cascade Jr./Sr. High School

**A Large-Scale Field Assessment Using Underwater Epoxy to Permanently Install Sensors for Full Year Temperature Monitoring in Mountain Streams**

Dona L. Horan, Sherry Wollrab, Daniel J. Isaak, and Brett B. Roper, U.S. Forest Service, Rocky Mountain Research Station

**A Large-Scale Nutrient Addition Experiment in the Kootenai River, Idaho: Effects of Phosphorous on Water Chemistry, Algal Production, and Periphyton Taxonomy**

Genny Hoyle, Kootenai Tribe of Idaho

**Use of hydrated lime to reducing the risks of release of invasive species from boats and ballast systems**

Laura Hughes, Amber Barenberg, Tasha Britton, and Charles Withers-Haley, University of Idaho

**Monitoring and Mitigation of Saturated Gases at Dworshak National Fish Hatchery**

Rhett Madsen, University of Idaho

**Evaluating the accuracy of sibling reconstruction programs using steelhead SNPs**

Jesse McCane, Pacific States Marine Fisheries Commission

**Evaluating the accuracy of sibling reconstruction programs using steelhead SNPs**

Alifia Merchant, University of Ohio School of Environment and Natural Resources

**Status of Kootenai River White Sturgeon Population**

Pete Rust, Idaho Department of Fish and Game

**Phenotypic and Genetic Identification of Bull Trout X Brook Trout Hybrids in the South Fork of the Salmon River**

Shiloh Ryker, Cascade Jr./Sr. High School

**Environmental factors affecting aquatic invertebrate production in wilderness streams of central Idaho**

Matthew V. Schenk, Idaho State University

**Genetic Stock Identification of Kelt Steelhead in the Yakima River Basin Across Multiple Years and Collection Times**

Jeff Stephenson, Columbia River Inter-Tribal Fish Commission

**Evaluation of a Feed Exposure Challenge for *Flavobacterium psychrophilum***

Kali A. Turner, University of Idaho

**Sensitivity Analysis of Kokanee Egg-to-Fry Survival Estimates in Lake Pend Oreille, Idaho**

Steven L. Whitlock, University of Idaho



## Friday, March 9 Meeting Agenda

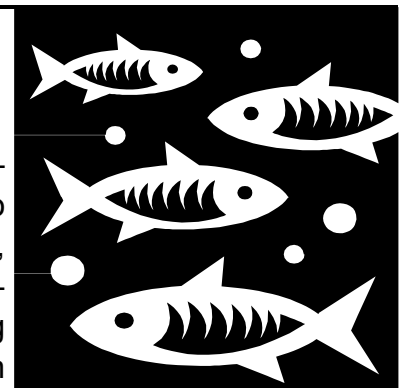
- Session 4: **Contributed Papers**  
 Moderator: TBA  
 Location: Bay 3
- 8:20-8:30 AM **Announcements and Introduction to Session**
- 8:30-8:50 **Enforcing Fisheries Management Decisions; Idaho Dept. Fish and Game's Effort to Protect, Preserve, Perpetuate and Manage Idaho's Fisheries Resources Through Law Enforcement**  
 Eric Crawford, Idaho Department of Fish and Game
- 8:50-9:10 **Monitoring Snake River Fall Chinook Salmon Spawning With A Remote Control Aircraft**  
 Brad Alcorn, Idaho Power Company
- 9:10-9:30 **Enhanced Protection of a Bacterial Coldwater Disease Vaccine by Culturing in Iron Limited Media**  
 Amy Long, University of Idaho
- 9:30-9:50 **An Evaluation of the Channel Catfish Fishery in Four North Idaho Lakes**  
 Kelly Carter-Lynn, Idaho Department of Fish and Game
- 9:50-10:20 **BREAK**
- 10:20-10:40 **Balancing Chinook Salmon and Kokanee in Coeur d'Alene Lake, Idaho**  
 Melo A. Maiolie, Idaho Department of Fish and Game
- 10:40-11:00 **Brook Trout Diet Patterns During Summer Oxygen Depletion in Owhi Lake Using Stable Isotope Analysis and Lipid Extraction**  
 Amy A. Martin, Washington State University
- 11:00-11:20 **Age Structure and Growth Analysis of Bowfin in Lake Lindsay Grace, Ga.**  
 Nick Porter, University of Idaho
- 11:20-11:40 **Evaluation of the Effectiveness of Several Hook Types at Minimizing the Occurrence of Deep Hooking Stream Trout When Bait Fishing**  
 Christopher L. Sullivan, Idaho Department of Fish and Game
- 11:40-12:00 **Best Paper Awards**

**See you next year in Boise! Travel safely.**

### **Join an AFS Committee in 2012!**

Involvement with the American Fisheries Society means something different to all of us. If you are reading this, then AFS means something to you. If you would like to participate in the chapter but aren't sure how, consider joining one of the various committees. Whether you're interested in becoming a chairperson or just want to check out what's going on, attend one of the committee meetings during the box lunch on Wednesday, March 7. Chose from the following committees:

- Anadromous Fish
- Aquaculture
- Fundraising
- Fish Habitat
- Public Education
- Native Fish
- Membership
- Mentoring



## ***Mentoring Social and Student Mixer***

Students and professionals alike are encouraged to attend the Mentoring Social on Wednesday, March 7 at Eagle Lodge which is only a short walk from the Coeur d'Alene Resort. The Mentoring Social begins at 5:30 pm where professionals "The Mentors" will be paired up with students to talk about fisheries issues, job opportunities, and any other topics of interest. Mentors will also facilitate networking between the student and other professionals with similar interests. To encourage participation, FREE BEER will be provided thanks to the Palouse and Portneuf unit student chapters.



Immediately following the Mentoring Social, starting around 6:30, the Student Mixer will begin where pizza and beer will be provided to all. Please be sure to thank the students for sponsoring this excellent event, and be sure to venture outside your comfort zone and get to know some new people.

## ***FishJam Version 2012***

After a year on the European tour the AFS "FishJam" is back to provide entertainment on Thursday night at the banquet! If you are a musician and would like to participate, bring your instrument or your voice and take part in the 2012 Idaho AFS FishJam. After an unplugged practice jam session on Wednesday night March 7, there will be a stage and sound system for the real FishJam on Thursday, March 8 after the fundraiser activities. The sound system will be provided, so all you need is an instrument. If you would like more information, contact Eric Stark at [eric.stark@idfg.idaho.gov](mailto:eric.stark@idfg.idaho.gov).



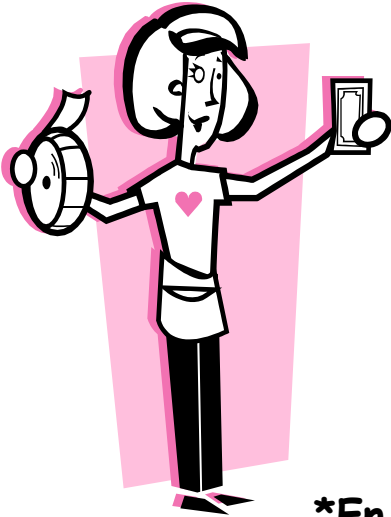
## ***Join the 2012 Spawning Run!***

The fourth annual "Spawning Run" will occur at the 2012 Idaho Chapter of the American Fisheries Society Annual Meeting. The 5K course will take you through a beautiful park setting and along Coeur d'Alene Lake. Biomark has generously offered to sponsor this year's run providing official timing and results. All participants will receive a t-shirt commemorating the event. For a scenic and refreshing start to the day, everyone is encouraged to participate by either walking or running. Sign-up sheets will be available at the registration table. Pre-spawn staging will occur on Thursday at 6:00 am at the registration table. Run/walk will start at 6:15 am. This is great way to burn off the previous evening's calories and interact with fellow AFS members. So, bring your running/walking shoes to the meeting, and join in!



## Thursday, March 8: Evening Social, Raffle and Auction!!

Party starts at 6:30pm in the Coeur d'Alene Resort - Bays 1 and 2.



Featuring:  
 Food & Beverages  
 Live & Silent Auction  
 Special Raffles  
 Tons of Raffle Prizes  
 &  
 Live Music provided  
 by the AFS FishJam!\*



\*Enjoy talent from within the chapter.  
 Everyone is welcome to participate.  
 Bring your voices and/or instruments!!!\*

## Fish-O-Flies and other Donations Sought

Fly Tyers, warm up your vises and bring your handcrafted flies to the 2012 ICAFS meeting to dress up *O. idahoii*.



Flies of all shapes and sizes are encouraged. As an added incentive,



FOR EVERY HALF-DOZEN FLIES YOU BRING,  
 YOU GET 3 GENERAL RAFFLE TICKETS!

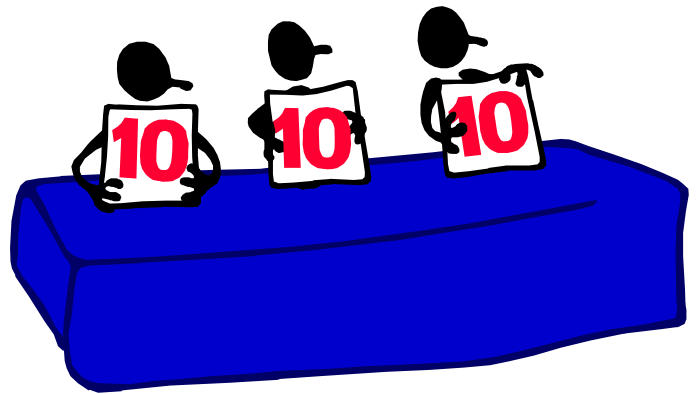


We are also seeking other donations. Remember folks, nothing is too small or too inexpensive to donate, and this is our once a year opportunity to raise money for the chapter. For you top notch anglers (or not so good), think about donating your favorite fishing trip. Contact Patrick Kennedy or Chris Sullivan (208-465-8404) or ([icafsfundraising@gmail.com](mailto:icafsfundraising@gmail.com)) about donations.



## Judges needed!

The Palouse Unit AFS will be administering the best paper and poster awards for students and professionals at this Idaho Chapter annual meeting. As always, we need chapter members who are willing to score presentations for us. Because of concurrent sessions, we will need lots of judges!

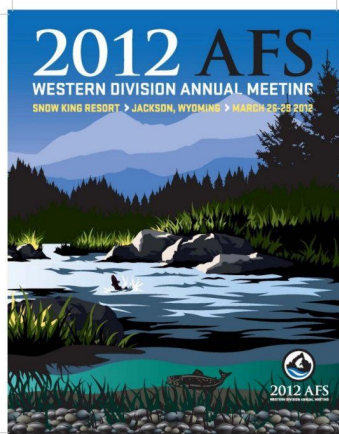


If you are interested in volunteering as a judge please contact Sam Bourett ([bour6715@vandals.uidaho.edu](mailto:bour6715@vandals.uidaho.edu)) as soon as possible.

## Mentoring Committee



There will be a bulletin board available at the Annual Meeting in Coeur d'Alene where you can post job announcements. Please bring written announcements for any and all temporary positions you plan to fill for the coming field season. And students, plan on stopping by the "Jobs Board" to see what interesting opportunities might be out there. This is a great opportunity to meet face to face with a potential employer.



## Don't Forget, Western Division AFS

It will be hosted by the Colorado-Wyoming Chapter and held at

Snow King Resort, Jackson, Wyoming  
March 26-29, 2012

Theme: "Ecosystem Management in a Twitter World"

For more information see: <http://www.cowyafs.org/>



## 2012 Idaho Chapter AFS Officer Nominations

At the annual business luncheon meeting on Thursday March 8, 2012, chapter members will vote for their leadership. Mary Faurot, our Nominations Committee Chair, has identified some extraordinary candidates. Candidates for each position are listed in alphabetical order.

### Position: Vice President

#### Tom Curet



Tom earned both his B.S. and M.S. in Fishery Resources from the University of Idaho, graduating in 1993. His career with the Idaho Department of Fish & Game began in 1993 after holding a variety of temporary fisheries positions around the state. Working as Regional Fisheries Biologist in Salmon from 1993 to 2000, he was assigned Regional Fishery Manager in 2001 and continues in that capacity. Tom attended his first ICAFS meeting in the early 1990's while in graduate school and was, and continues to be, inspired by the professionals attending and contributing to the chapter. Tom believes he has been professionally enriched through his involvement with ICAFS and therefore feels the time has come to contribute in a more active and significant capacity. Although Tom has pre-

sented papers, assisted with plenary sessions, and moderated sessions at various ICAFS meetings, he is now committed to serve the chapter that has provided so much opportunity for professional development. Tom is honored to be nominated as Vice-President of the ICAFS, and if elected will do his best to ensure that the chapter and chapter meetings continue be an excellent forum for professional dialogue and development, education, and mentoring.

#### Dan Garren



Dan Received a BS in Biology from Radford University, and an MS in Fisheries and Wildlife Sciences from Virginia Tech. He has worked for both West Virginia DNR and the Virginia Department of Game and Inland Fisheries before moving to Idaho to work with IDFG in 2001. Dan has worked with IDFG as a Regional Biologist for 8 years before being assigned to the Regional Fisheries Manger position in Idaho Falls. As a result of his background, Dan has had the opportunity to be involved with three separate AFS chapters over his 20 year fisheries career. He's been heavily involved in the Idaho Chapter since arriving in Idaho, including four years as the chair of the Native Fish Committee. After a year or two

of not serving, he believes it's time to re-engage with the chapter, and welcomes the opportunity to run for the position of Vice President.



## Position: Secretary/Treasurer

### Brett High



Brett High is a regional fisheries biologist for the Idaho Department of Fish and Game in Idaho Falls where he gets to spend his time on the Teton and South Fork Snake rivers working with trout. When he's not working, Brett likes to explore the region's mountains, streams, and rivers with his family. Brett is an Idaho native, and has received degrees from three different Idaho institutions including an Associate's degree from Ricks College, a Bachelor's degree from Idaho State University, and Master's degree from the University of Idaho. Brett first became a member of the Idaho Chapter of the American Fisheries Society in 1997 while studying at Idaho State University and has been involved

with the chapter ever since (excluding a two year stint while living in Oregon). Brett enjoyed gaining a different AFS perspective while participating in the Oregon AFS chapter while working on the Malheur National Forest. In 2004, Brett returned to Idaho and was glad to resume participating in the Idaho Chapter meetings. Brett is interested in serving the Idaho Chapter of AFS as a secretary/treasurer because this opportunity would represent a chance to give back to an organization that has provided so much inspiration, friendship, and support.

### Craig Rabe



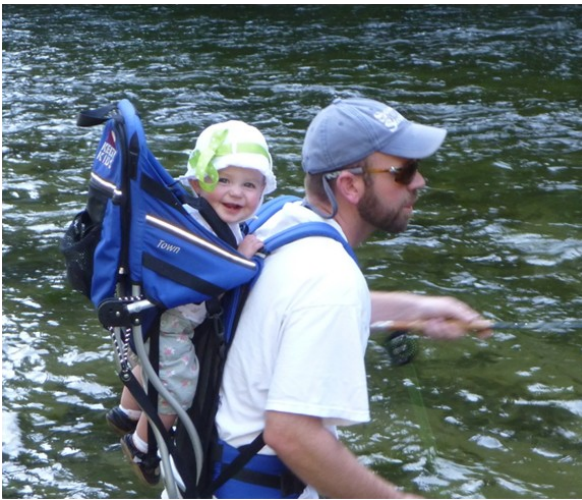
Craig Rabe serves as a project leader for the Nez Perce Tribe Department of Fisheries Resources Management. Since 2006, Craig has managed the monitoring and evaluation component of a summer Chinook supplementation project located in central Idaho. His work for Federal, State, Tribal, and private sector employers has provided Mr. Rabe a diverse background in aquatic resources and has enabled him to establish numerous relationships with fisheries professionals throughout the Pacific Northwest. Craig received his undergraduate and graduate degrees in Fisheries Resource Management from the University of Idaho. Craig has been actively involved with the Idaho Chapter of the American Fisheries Society since the early 1990's and has regularly provided presentations on work he has been involved with.

Craig is honored to have the opportunity to give back to the Idaho Chapter and would appreciate your vote for the Secretary/Treasurer position.



## Position: Nominations Chair

### Brett Bowersox



Brett is a Regional Fishery Biologist for the Idaho Department of Fish and Game in the Clearwater Region. He has worked in this position for the last 5.5 years. He has worked on a variety of projects in that time including the Potlatch River Steelhead Monitoring and Evaluation Project, Idaho Supplementation Studies, Hell's Canyon White Sturgeon, and various regional projects. Prior to working for IDFG Brett worked as an Assistant District Fish Biologist with ODFW predominately with desert fishes in Eastern Oregon. He received his B.S. degree in Biology from Calvin College in Grand Rapids, Michigan and his M.S. degree in Fisheries Resources from the University of Idaho. He feels very fortunate and privileged to work with fishery resources as exciting and unique as those found in the state of Idaho.

Brett is honored to be nominated for a position with the AFS ExCom to give back to the chapter. His involvement with the chapter has always been very rewarding; whether it has involved presenting at meetings, valuable interactions with other fisheries professionals or being involved in numerous mentoring opportunities with students.

### Greg Schoby



For the past 3.5 years I have worked as a Regional Fisheries Biologist with the Idaho Department of Fish and Game in the Upper Snake Region, where I've had the pleasure of working on some of the finest trout waters in the state. Prior to that, I worked as a Fisheries Research Biologist for IDFG on Lake Pend Oreille from 2006 to 2008, studying kokanee and lake trout. I moved to Salmon, Idaho the day after receiving a B.S. in Biology from Central Washington University in 2000 to begin working as a fisheries technician for IDFG. I have been an AFS member since 2001, after attending my first Idaho Chapter AFS that winter. I received an M.S. in Biology from Idaho State University in 2006, where I worked with Dr. Ernest Keeley while studying migration patterns, home range size, and foraging ecology of bull trout and westslope cutthroat trout in the upper Salmon River basin. I am excited about the opportunity to serve the Idaho Chapter as the Nominations Chair, and I know many of our committed and diverse members will make excellent candidates for future leadership positions.

Our entire membership owes ALL of these candidates our gratitude for their willingness to step forward and serve the Chapter! We are all busy people and have a full plate, so it is no small chore to take on one of these positions.



## Student Corner

### *AFS Palouse Unit Student Activities*



The Palouse Unit AFS (PUAFS) participated in Idaho Fish and Game's annual Snake River sturgeon sampling trip on October 28<sup>th</sup> - 29<sup>th</sup>. 2011. The 12 students were split into 3 Idaho Fish and Game jet boats on Friday afternoon and had lines wet before the sleeping bags and supplies were transported up the hill to the Billy Creek Cabin. Friday afternoon 4 sturgeon were caught at Billy Creek and downstream holes on a mixture of roe and raw fish parts. Students assisted biologists in measuring, scanning for tags, tagging, and scanning sturgeon for metal. After a delicious BBQ and socializing about fishing stories and all things fish related, participants were greeted to a cool and clear Snake River morning on Saturday. Upon getting an early launch, 3 more sturgeon were caught upstream of Billy Creek in Hell's Canyon during the day, with the largest fishing measuring 126 cm. During this event, students were able to network with IDFG professionals, learn about sturgeon biology, and participate in hands-on sturgeon sampling. The Palouse Unit would like to extend a special thanks to Idaho Fish and Game for making this opportunity possible, including Joe DuPont, Don Whitney, Ryan Banks, and Justin Barrett.



PUAFS members Andy Osler, Ian Faurot, and Katie Coyle enjoy sturgeon fishing with IDFG in Hell's Canyon on October 28<sup>th</sup>- 29<sup>th</sup>.



# Current Chapter Officers

## Executive Committee



Jason Vogel,  
President  
(208)843-7145



Dmitri Videgar,  
President-Elect  
(208)989-1905



Joe DuPont,  
Vice-President  
(208)799-5010



Ernest Keeley,  
Past President  
(208)282-3145



Tim Copeland,  
Treasurer  
(208)465-8404



Bill Horton,  
Secretary  
(208)334-7358



Mary Faurot,  
Nominations Chair  
(208)373-4309



Matt Green,  
Portneuf Unit President  
(208)282-2139



Samuel Bourret  
Palouse Unit President  
(860)508-3565

## Committee Chairpersons



Mike Peterson,  
Anadromous Fish  
(208)465-8404 x 1551



Mike Edmondson,  
Anadromous Fish  
(208)334-2189 x 234



Lars Alsager  
Aquaculture  
(208)476-3331



Stephanie Hallock,  
Fish Habitat  
(208)686-0701



Corey Lyman,  
Fish Habitat  
(208)557-5838



Dan Scaife,  
Fish Habitat  
(208)765-7488



Patrick Kennedy,  
Fundraising  
(208)465-8404 x 271



Chris Sullivan,  
Fundraising  
(208)465-8404



Dona Horan,  
Membership  
(208)373-4399



Steve Elle,  
Mentoring  
(208)465-8404



Cathy Gidley,  
Native Fish  
(208)610-6139



Cori Laude,  
Native Fish  
(208)255-8567



Lauri Monnot,  
Public Education  
(208)373-0461

