



# Gill Raker Gazette

The Newsletter of the Idaho Chapter of the  
American Fisheries Society

## 2010 Annual Meeting Edition



### President's Message

### See you in Pocatello!

By Jim Fredericks, ICASF President

It's hard for me to believe the 2010 annual meeting is already around the corner. Fortunately, Ernest has seen it coming and has done an outstanding job of making arrangements and putting together a great program. With travel restrictions reflected in poor attendance to Western and other chapter meetings last year, I can admit that all of us in Excom were a *tiny* bit concerned that we may not get the attendance in Pocatello that we want.

I'm delighted to say that, based on the number of paper and poster submissions, I don't think that will be the case. We have 50 oral presentations and 18 posters, which is nearly what we had last year in Boise!!

You will see a few things from the 2009 meeting that will be incorporated

| <u>Inside this Issue</u> |       |
|--------------------------|-------|
| Annual meeting           | 3     |
| Information/Registration |       |
| Hotel Info/ Reservations | 4     |
| Workshop                 | 5     |
| Meeting Activities       | 6-8   |
| 2010 Officer             | 9-11  |
| Nominations              |       |
| Student Corner           | 12-13 |
| Draft Agenda             | 14-20 |
| Upcoming Events          | 21    |

this year. The beer mugs will once again be issued at registration and will be *required* to draw from the tap at the social. This practice, suggested a couple of years ago by one of our members, greatly reduced the number of plastic cups discarded during our social. It's one small step toward guilt-free beer drinking! We'll also offer another "speed presentation" session for willing poster presenters. I'm pleased to report that Referee Elle will once again oversee the event. And for those who

appreciated the "full meal deal" at the social—that will be back as well. We'll also be trying some new things. In a continual attempt to foster development of young professionals, the mentoring committee and student units have developed a more structured mentoring opportunity at the student mixer. Those interested can sign up to participate when registering for the meeting. It's shaping up to be another great meeting, so get registered and we'll see you in Pocatello!

Given that this is my last "president's address", I'd like to express how much I've appreciated the opportunity to serve as chapter president. I (probably like most presidents before me) accepted the nomination with a great deal of trepidation. Since 1963, our chapter has benefitted from the leadership of some of Idaho's most highly regarded natural resource professionals. With an annual budget exceeding \$50,000, meeting attendance approaching 300, and delicate issues of advocacy to deal with, I recognized it's not a duty to be taken lightly. Three years later, here's what I learned.....*it wasn't as hard as I thought it would be!!!* That has less to do with my abilities, than the fact that the president has the support and help of the entire Excom, committee chairs, and membership in general. I also had the useful counsel of Past-President Bart when needed. The chapter officers I got to work with not only made the job manageable, but downright enjoyable.

Excom service is very much a collective effort. That's a point worth making for two reasons. First, it's an opportunity to acknowledge the people who helped me fulfill my duties. Fundraising, registration, A/V coordination, program development, workshops, and hotel arrangements are among the critical elements of a successful meeting. The Excom and committee chairs made those jobs look easy in the past two years (and they will again next month, I'm sure) but I know it's not! Second, I've spoken with several people who are "*considering*" running for Excom "*maybe next year*". If you're one of them, I urge you to do so. It has been one of the most rewarding experiences of my professional life, and I know most past presidents would feel the same. Because of the support of the other chapter officers, it is not as time consuming, stressful, or demanding as you may think. Finally, I took great satisfaction in knowing (through the positive feedback from the membership) the work of Excom was important and appreciated. I was continually impressed with the thoughtfulness of the chapter and expressions of appreciation. The pleasure was mine.

---

## 2010 ICAFS Annual Meeting

### Idaho's Native Fishes: Understanding Their Distribution and Abundance



Date and Location: March 3-5, 2010. Red Lion Hotel, 1555 Pocatello Creek Road, Pocatello, Idaho 83201, (208) 233-2200.

Workshop: 2 March 2010; Spring Creek Restoration (more information soon).

Ernest Keeley - Annual Meeting Program Chair, at: [keelerne@isu.edu](mailto:keelerne@isu.edu).

### Annual Meeting and Workshop Registration

Register online at <http://www.idahoafs.org/>

All registrations (on-line, e-mail) must be received by February 27<sup>th</sup>, otherwise, registration is at the door (you don't want that!)

#### *Register Now or Pay More*

##### Registration Fees

Preregistration (through February 19) - \$175 (AFS student members free)

Late Registration (after February 19) - \$225

Spring Creek Workshop - \$50

For questions or problems with registration please contact:

Chris Kozfkay

208) 939-6713

[christine.kozfkay@idfg.idaho.gov](mailto:christine.kozfkay@idfg.idaho.gov)

**2010 Annual Meeting**  
**Red Lion Hotel -Pocatello**

**1555 Pocatello Creek Road, Pocatello, Idaho**  
**Tel: 1-208-233-2200, Fax: 1-208-234-4524**  
**E-mail: [pocatello-sales@redlion.com](mailto:pocatello-sales@redlion.com)**



We have a block of rooms available but book your arrangements as early as possible. We expect a good turnout for this meeting.

**Located in the heart of Pocatello, near Idaho State University.**

**FROM THE POCATELLO AIRPORT:**

**I-86 to I-15 South to Exit 71 turn left on to Pocatello Creek Road and hotel is half a block up on the right side of the street.**

**FROM I-15 NORTH:**

**Take Exit 71 turn left on to Pocatello Creek Road and hotel is half a block up on the right.**

**FROM I-15 SOUTH:**

**Take exit 71 and turn right on to Pocatello Creek Rd and the hotel is then on the right side**

## 2010 WORKSHOP

Workshop Agenda and Registration on-line at <http://www.idahoafs.org/>

March 2<sup>nd</sup>, 2010 1-Day Workshop

Sponsored by Idaho Chapter American Fisheries Society (open to all)

Pocatello, Idaho

### **Unraveling the Spring Creek Mystery**

**What should they look like and how do we get there?**



Workshop Registration Fee (Lunch included): \$50

**Registration Link:** <http://www.idahoafs.org/meeting.php>

Red Lion Hotel

1555 Pocatello Creek Rd.

Pocatello, ID 83201

Phone: 208-233-2200

Time 9:00 – 5:00

Workshop Goals:

1. Participants will understand what causes spring creeks to form and function in the ways they do.
2. Participants will be given tools to determine the level of disturbance that has occurred.
3. Provide Participants with examples tools/techniques used to complete spring creek restoration, including do's & don'ts (lessons learned), by way of case studies.

My contact for info about workshop:

Lee Mabey

[e-mail: lmabey@fs.fed.us](mailto:lmabey@fs.fed.us)

---

## 2009 MEETING ACTIVITIES

### **NEW!! Student Professional Ice Breaker**

The student units are introducing a new mentoring strategy this year during the pizza mixer to increase student and professional interaction. At the beginning of the mixer, students will be paired with professionals based on interest and knowledge. Students will have the opportunity to ask questions and hopefully create professional connections for future job opportunities. This exercise will be an "ice breaker" to facilitate student and professional conversations guiding and advising where a certain education may lead. Afterward, conversations will be encouraged to mingle about with other students and professionals confidently developing associations for our future young professionals.

---

### **Spawning Run**

The second annual "Spawning Run" will be occurring at the 2010 Idaho Chapter of the American Fisheries Society Annual Meeting. For a scenic and refreshing start to the meeting's second day (Thursday), we encourage all to participate by either walking or running. This is good way interact with each other. Bring your shoes to the meeting and plan on joining in.

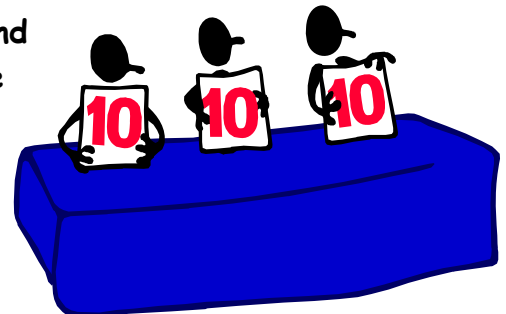


Look for the sign-up sheets at the registration table. Pre-spawning staging will occur on Thursday at 6:00 am at the registration table. Run/walk will start at 6:15 am.

---

### **Judges Needed!**

The Palouse Unit AFS administers the best paper and poster awards for students and professionals at the Idaho Chapter annual meetings. As always, we need chapter members who are willing to score presentations for us. Because of concurrent sessions, we will need more judges than in the past!



If you are interested in volunteering as a judge please contact Tim Caldwell ([cald3105@vandals.uidaho.edu](mailto:cald3105@vandals.uidaho.edu)) as soon as possible.

---

# 2010 ICAFS Social and Auction



Thursday, March 4

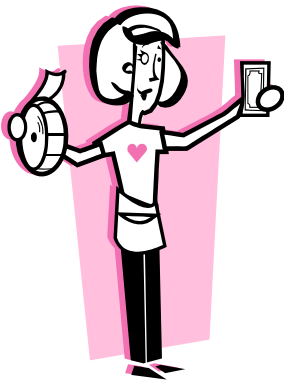


Featuring:

Food and Beverages  
Silent and Live Auction  
Tons of Raffle Items  
Football Toss  
and  
Live Music!



**Fly tyers:** warm up your vises and bring your handcrafted flies to the meeting or mail them to John Cassinelli or Eric Stark, to dress up *O. idahoii*. Flies of all shapes and sizes encouraged. As an added incentive, **FOR EVERY HALF-DOZEN FLIES YOU BRING, YOU GET 3 GENERAL RAFFLE TICKETS!!**



## 2009 Fund Raising--Call for Donations

The meeting is only a few short weeks away and we really need to pick up the pace on donations. Once again, we have sent out over 350 letters to businesses asking for their support and donations. We are hoping that the general membership can assist the fundraising committee this year with gathering donations. Please take a minute to ask friends, family or someone out of the blue who owns a business if they would like to support ICAFS.

If you would be willing to donate your fishing or hunting expertise (for auction trips), or if you know a guide or outfitter who might be willing to donate a day or two of their time please let me know; it would be greatly appreciated!

Over the past few years we have been very fortunate to have some of our artistically talented members show up with artwork to donate. Those items have been a big success and we hope that some of you will once again be willing to share your skills with the chapter. Hand-crafted items are always welcome so bring your favorites. Remember, all donations are tax deductible and we have developed a "face to face letter" which contains our nonprofit information (tax exempt # etc.). Please find a copy of this letter attached to this message. If this would be of use to anyone please contact me, and I will send you a copy.

Please remember to support those businesses that support our chapter. We have a list of our sponsors located on our website at <http://www.idahoafs.org/sponsors.php> . We have tried to make this list as accurate as possible but if you are aware of any omissions, please contact us.

### **Don't forget about the Fish-O-Flies, *Oncorhynchus idahoii***

Fellow tyers, warm up your vises and bring your handcrafted flies to the meeting or mail them to John Cassinelli, to dress up *O. idahoii*. Flies of all shapes and sizes encouraged. As an added incentive, **FOR EVERY HALF-DOZEN FLIES YOU BRING, YOU GET 3 GENERAL RAFFLE TICKETS!!**

Bring your money to support the ICAFS and have fun at this year's social.

Remember folks, nothing is too small or too inexpensive to donate, and this is our once-a-year opportunity to raise money for the chapter. If you have items to donate, please send them to the address below or call, and we can make other arrangements.

Idaho Chapter American Fisheries Society  
c/o John Cassinelli  
1414 E Locust Lane  
Nampa, ID 83686

(208)465-8404



---

## 2010 AFS OFFICER NOMINATIONS

Martin Koenig, our Nominations Committee Chair, has identified below some extraordinary candidates. Candidates for each position are listed in alphabetical order.

### Position: VICE PRESIDENT

#### Kim Apperson

Kim Apperson has been a Fisheries Biologist for Idaho Department of Fish and Game for the past 22 years; spending the last 16 years in McCall working on various anadromous research and management projects in central Idaho. Prior to that Kim studied white sturgeon in the Kootenai and Snake rivers and resident salmonid populations in the Coeur d'Alene River. Kim received an MS degree in zoology from the University of Idaho in 1987; and a BS in biology in 1980 from California State University, Fresno. Kim worked in a variety of fisheries positions in the early 1980s for California Department of Fish and Game, private industry, and as an independent consultant before attending graduate school. Kim has been an active member of ICAFS since 1985, participating in several committees, and chairing or co-chairing a couple of those over the years. Kim served as Secretary/Treasurer of the Chapter in 2001. Our Chapter has remained vibrant and continues to generate energy among members to lead efforts in education, conservation, and policy making. It is this collective energy that retains membership and attracts younger professionals to join and contribute. Kim would be honored to be chosen to represent our Chapter and all of the fine accomplishments made by our membership.

#### Dimitri Vidregar

Dimitri currently works as a Fish Biologist at the Bureau of Reclamation's Snake River Area Office in Boise. In his current position, Dimitri works with fisheries issues involving ESA coordination. Dimitri's past work experiences have allowed him opportunities to work in the private sector and state and federal agencies, most recently with the Idaho Department of Fish and Game. A mix of resident and anadromous work has given him a healthy respect for the complexity of Idaho's fisheries. Dimitri earned his Bachelors degree from Montana State University and his Masters from the University of Idaho. He has been involved with AFS since moving to Idaho in 1997. He has served as co-president of the student chapter while at the University of Idaho, two years as a fundraising chair, and has also participated in the Anadromous and Education committees. Dimitri believes in the mission of AFS and strongly supports the role that AFS must play with the present and future of Idaho's fisheries resources. He would be honored to have the opportunity to work with EXCOM in guiding ICAFS through a term of Vice-President.

---

## **SECRETARY/TREASURER**

### **Tim Copeland**

I have been a member of the AFS since 1990 and have been active in four different chapters. I have greatly benefitted from my participation in AFS and I try to give back to the organization as best as I can. Offices I have held before joining the Idaho Chapter include Editor of the Southern Division Newsletter, Communications Committee chair for the Virginia Tech Chapter, and a term as President of the Virginia Tech Chapter. I have been an active member of ICAFS since 2004 and Anadromous Committee Chair since 2008. Last year, I helped organize the plenary session for the ICAFS annual meeting. Professionally, I am a Senior Fishery Research Biologist for the Idaho Dept of Fish & Game in Nampa. As part of this job, I have overseen two large research projects. There is a fair bit of fiscal responsibility involved in that position. I strongly believe in the AFS as a professional society and have particularly enjoyed being a member of the Idaho Chapter. I would be honored to serve the Chapter in such an important position.

### **Brett High**

Brett is currently a regional fisheries biologist for the Idaho Department of Fish and Game where he works primarily on the South Fork Snake and Teton rivers. Brett has worked for IDFG since 2004. Brett was born and raised in eastern Idaho and loves the resources that Idaho offers. Brett earned an associate's degree in biology education from Ricks College in 1995, and started down the fisheries path by working as a seasonal employee for the U.S. Forest Service on the Salmon-Challis National Forest. Brett completed his B.S. degree in ecology which he earned from Idaho State University in 1999. Brett met Ted Bjornn at the 2000 ICAFS meeting and soon thereafter started pursuing a M.S. degree at the University of Idaho. Brett worked with Ted and with Dave Bennett to complete his Master's work on adult steelhead migratory behavior in 2002. From 2002 to 2004, Brett worked for the Forest Service on the Malheur National Forest in eastern Oregon and enjoyed being exposed to the Oregon Chapter AFS during those two years. Brett's first position with IDFG was as a research biologist out of Nampa Research where he performed statewide research on wild trout issues from 2004 through 2007. Brett has been involved with AFS since 1997, and has found the experience to be extremely rewarding through the friendships that are gained and the professional development opportunities that AFS provides. Brett would like to give back to the Idaho Chapter AFS by serving in the secretary/treasurer position.

---

## NOMINATIONS CHAIR

### Damon Keen

Damon is a Regional Fishery Biologist for the Idaho Department of Fish and Game in the Upper Snake Region, stationed at Henrys Lake. Damon has been stationed there since 2000. Damon has worked for the IDFG since 1996, first as a temporary employee at Clearwater Hatchery and then as a permanent employee beginning in 1999. Damon has worked and been stationed in the Panhandle, Clearwater, Magic Valley and Upper Snake Regions. Damon received a B.S. degree in Biology from Boise State University in 1995. Damon has a diverse background including 17 years of business management. Damon also taught high school biology for two years and was a substitute teacher for an additional two years. Damon's current job description includes fishery management activities at Henrys Lake and development of Region wide fishery habitat improvement projects. Damon's emphasis is coordination between NGO's, government entities, and the public at large. Damon especially enjoys interaction with the sporting public. Damon hopes to take a more active role in ICAFS. He would be honored to serve as Nominations Chair.

### Mike Peterson

Mike is currently a Senior Research Fisheries Biologist with the Idaho Department of Fish and Game where he has worked since 2003. Prior to beginning his career with IDFG he obtained his BS and MS in Fishery Resources from the University of Idaho. He became the Redfish Lake sockeye evaluation biologist in 2006. Mike has been an active AFS member since 1998 (Palouse Unit and ICAFS) and served the chapter as the fundraising co-chair in 2007 and 2008. He has also been very active within the anadromous committee assisting with the re-development of the "Idaho Salmon and Steelhead" brochure and the plenary session for last year's annual chapter meeting. When he's not working, Mike can typically be found utilizing our states anadromous resources on the rivers. Mike is interested in continuing his involvement within the chapter as the Nominations Chair. He believes that this position is one of the most important positions within Ex-Com because of its direct link to the future direction of the chapter. He also believes that the relationships he has developed with many of the chapter members will lead to a very competitive and successful election for the future chapter Ex-Com.

Editors Note: Our entire membership owes ALL of these candidates our gratitude for their willingness to step forward and serve the Chapter! I don't believe a Nominations Chair has ever heard someone say "sure I'll do it! I have lot's of spare time!"

---

---

# Student's Corner—Profiles

## Portneuf Student Unit AFS – Scott Collins *Graduate Student—Stream Ecology Center*



1. What year in school are you this semester? I am in my fourth semester here at Idaho State University.
2. Why did you decided to pursue a career in fisheries? The course work I took as an undergraduate and my experience assisting researchers in the field got me excited about working in the fisheries field.
3. What is your favorite class to date? As an undergraduate, my favorite class was aquatic entomology. Aquatic insects are truly fascinating and I couldn't help but learn as much as I could in the class. In graduate school, I really enjoyed advanced stream ecology. The hands on approach to learning the multitude of processes that occurs in and around the stream was very interesting.
4. has inspired you the most as a young fisheries professional? My advisor, Dr. Colden Baxter, has been very influential to me. His passion for research and learning is very contagious.
5. What are your goals or what do you hope to accomplish as a fisheries professional? My professional goal is to enter academia and continue to conduct research. I would also continue being an active member in my local AFS chapter, hopefully as an officer, as well as being a mentor for undergraduates. The positive experiences I have had as an undergraduate in the AFS has had a great impact on my view of the organization and its role in the development of young fisheries scientists.
6. What was your favorite summer fisheries job? I spent a real fun summer working at Lake Superior State Universities Aquatic Research Lab tracking lake sturgeon in the St. Marys River. We tracked acoustically tagged sturgeon throughout the St. Marys in an effort to detect habitat preferences and movement patterns. Working at the ARL also provided me with experience assisting US Fish and Wildlife and Canadian Department of Fisheries and Oceans professionals with sea lamprey control efforts on the St. Marys River.
7. How important do you think AFS will be in your future as a fisheries professional? I consider myself to be a lifelong AFS member. AFS provides a platform by which I present my research and learn about the newest research in the field.
8. What is your favorite aspect of being a part of an organization like AFS? I enjoy the AFS conferences. Presenting research and talking fisheries over a beer is something that can't be beat.

### Scott F. Collins

web page: <http://www.isu.edu/departments/strmecol/>

email: [collscot@isu.edu](mailto:collscot@isu.edu)

---

# Student's Corner—Profiles

## Palouse Student Unit AFS – Marius Myrvold *Graduate Student—University of Idaho*



1. What year in school are you this semester? I'm currently in the first year of my PhD.
2. Why did you decided to pursue a career in fisheries? I've always been interested in outdoor activities such as fishing, and I've always been curious about how things in nature are connected. I have also seen the results of poor, or even lack of, management. Having the opportunity to enjoy the outdoors is a great privilege and it is of great importance for me to keep it this way. In order to make a change it was therefore an easy choice for me to enter the field of natural resources.
3. What is your favorite class to date?? I really enjoyed an aquatic ecology course I took at the University of British Columbia that dealt particularly with the influences of land management on aquatic ecosystems.
4. Who has inspired you the most as a young fisheries professional? I cannot point out one. Several people, ranging from professors to previous and current colleagues have inspired me and still are inspiring me.
5. What are your goals or what do you hope to accomplish as a fisheries professional? I know that results don't come over night, but if I can participate in a change of legislation that puts ecosystem health and viable fish stocks first, I will be satisfied.
6. What was your favorite summer fisheries job? This is an easy question! I've worked as a fisheries ranger for three summers in the very north of Norway, enforcing recreational fisheries regulations. Two months under the midnight sun on the coast of the Barents Sea was a great experience!
7. How important do you think AFS will be in your future as a fisheries professional? It is hard to answer specifically at this point but I'm certain that any organization, like AFS, that promotes sound management and sharing of knowledge will be a valuable resource as well as an arena for making contacts.
8. What is your favorite aspect of being a part of an organization like AFS? The fact that it serves as a source of information and resources and that it consists of people with similar interests.. I went sturgeon fishing this fall and I really look forward to taking part in upcoming events.

**Marius Myrvold**

[myrv3570@vandals.uidaho.edu](mailto:myrv3570@vandals.uidaho.edu)

---

## 2010 Annual Meeting Agenda

### Tuesday, March 2

---

#### **Workshop Session: Unraveling the Spring Creek Mystery**

##### **Understanding Spring Creek Form and Function**

- 9:00 – 9:15 Introduction and Housekeeping
- 9:15 – 9:45 **Intermountain spring creeks: what do we really know about them and how do we restore them?** Scott E. Gillilan, Gillilan Associates, Inc
- 9:45 – 10:05 **Spring creeks - where does the water come from and how does it get there? Methods and tools for assessing springs and groundwater flow systems feeding springs: examples from the Greater Yellowstone area.** David Susong, USGS.
- 10:05 – 10:25 **The flows are different but what about the plants? Role of vegetation in spring creeks contrasted and compared to snow melt systems.** Chris Hoag, Hoag Riparian & Wetland Restoration, LLC.
- 10:25 – 10:40 Morning Break sponsored by: Biota Research & Consulting, Inc.
- 10:40 - 11:10 **An ecological approach to spring creek restoration in the Mojave Desert, with a general discussion of sediment transport dynamics.** Chad Gourley and Ned Andrews, Otis Bay Ecological Consultants.
- 11:10 – 11:30 **Using habitat parameters to assess health of spring creeks. Preliminary results of habitat assessments across an array of spring creeks at the Silver Creek Preserve.** Briana Schultz, Graduate Student Montana State University.
- 11:30 – 11:50 **Factors influencing the distribution and recruitment of juvenile cutthroat trout in the Teton River, Idaho.** Martin Koenig, Idaho Fish and Game.
- 12:00 – 1:00 Buffet Lunch
- 12:20 – 12:50 **Observations of a spring creek aficionado, plants, food, cover and fish what's there relation?**

Mike Lawson, Author and Manager Henry's Fork Angler.

##### **Tools and Techniques and Lessons Learned along the way**

- 1:00 – 1:20 **Understanding habitat enhancement potential of degraded spring creek systems.** Ryan Colyer, Biota Research & consulting Inc.
- 1:20 – 1:40 **Aquatic macrophytes, sediment, and flow on the Henry's Fork and other spring creeks.** Adonia R Henry, Scaup & Willet LLC.
- 1:40 – 2:00 **Evolution of thought, can I do spring creek restoration?** Jim Gregory, Gregory Aquatics.
- 2:00 – 2:20 **Planting techniques to restore spring creeks.** Chris Hoag, Hoag Riparian & Wetland Restoration, LLC.
- 2:20 – 2:40 **Restoration and enhancement techniques, lessons learned from 12 years.** Katie Salsbury, Intermountain Aquatics Inc.
- 2:40 – 3:00 Afternoon Break sponsored by: The Nature Conservancy, Silver Creek Preserve,
- 3:00 - 3:20 **What is the appropriate regulatory role for spring creek restoration and fishery enhancement projects.** Tom Bassista, Idaho Division Water Resources and US Army Corp.
- 3:20 – 3:40 **Case study of the Blackfoot Bottoms.**  
TBA,
- 3:40 – 4:00 **Case study of past restoration structures on Flat Creek through the National Elk Refuge.** Lara Sweeney, Wyoming Game and Fish Department
- 4:00 – 4:30 **Panel Discussion:** All presenters
- 4:30 Wrap Up
-

---

## Wednesday, March 3

---

|  |   |
|--|---|
| 8:00–8:20 AM   | <b>Opening Remarks and Presidential Message</b><br>ICAFS President, Jim Fredericks  |
| <b><i>Plenary Session: Idaho's native fishes: understanding their distribution and abundance</i></b> |   |
| <b><i>Caribou and Teton rooms</i></b>  |   |
| 8:20–8:30 AM   | <b>Introduction to Plenary Session</b><br>Ernest Keeley, Moderator  |
| 8:30–8:55  | <b>The biogeography of Idaho's native fishes: patterns and problems</b><br>J.D. McPhail, The University of British Columbia   |
| 8:55–9:20  | <b>Historic species occurrence records from Idaho and their utility in native fish management</b><br>Donald W. Zaroban, Orma J. Smith Museum of Natural History and Idaho Department of Environmental Quality |
| 9:20–9:45  | <b>Genetic investigations of Idaho's native fishes – a taxonomic and genomic black-box</b><br>Christine C. Kozfkay, Idaho Department of Fish and Game   |
| 9:45–10:15   | <b>BREAK</b>  |
| 10:15–10:40  | <b>Distribution, abundance, trends, and genetic purity and diversity: key components to Idaho Fish and Game's status assessments</b><br>Kevin A. Meyer, Idaho Department of Fish and Game                     |
| 10:40–11:05  | <b>Status of Native Fish in the Western United States: a range-wide perspective</b><br>Scott A. Grunder, Idaho Dept. of Fish and Game   |
| 11:05–11:30  | <b>Conserving native fishes across geographical and jurisdictional boundaries</b><br>Jody K. Brostrom, U.S. Fish and Wildlife Service   |
| 11:30–11:55  | <b>Panel discussion</b><br>All speakers   |
| 11:55- 12:00   | <b>Concluding remarks</b><br>Ernest Keeley, moderator   |
| 12:00–1:40PM   | <b>BOX LUNCH: COMMITTEE BREAKOUTS (room assignments TBA)</b>  |

---

### ***Session 1: Native fishes - contributed papers***

#### ***Location: Caribou and Teton rooms***

|              |   |
|--------------|---|
| 1:40–1:45 PM | <b>Introduction to Session,</b><br>Dan Garren, Moderator  |
| 1:45–2:05 PM | <b>Diverse values and relevance of native species in wildlife management: perspectives for wildlife managers</b><br>Mark Gamblin, Idaho Department of Fish and Game |
| 2:05–2:25 PM | <b>Yellowstone cutthroat trout status and trend in the Henry's Fork, Teton, and Sinks drainages</b><br>Jim DeRito, Henry's Fork Foundation                          |

---

---

|              |  |
|--------------|--|
| 2:25–2:45 PM | <b>Update on protecting and restoring mountain whitefish in the Big Lost River</b><br>Jim Gregory, Gregory Aquatics  |
| 2:45–3:05 PM | <b>Barriers to movement and genetic population structure of westslope cutthroat trout (<i>Oncorhynchus clarkii lewisi</i>) in the Salmon River Basin, Idaho</b><br>Sammy L. Matsaw, Idaho State University |
| 3:05–3:35 PM | <b>BREAK</b><br><b>(Sponsored by TBA)</b>  |
| 3:35–3:55 PM | <b>A comparison of life histories among selected Snake River steelhead populations</b><br>Timothy Copeland, Idaho Department of Fish and Game  |
| 3:55–4:15 PM | <b>Range-wide phylogenetic analysis of cutthroat trout (<i>Oncorhynchus clarkii</i> ssp.) subspecies from western North America</b><br>Janet L. Loxterman, Idaho State University                          |
| 4:15–4:35 PM | <b>Conservation aquaculture as a critical tool to recover burbot populations in Idaho's Kootenai River</b><br>Ken Cain, University of Idaho  |
| 4:35–4:55 PM | <b>Genetic adaptation of redband trout in desert and montane environments</b><br>Shawn R. Narum, Columbia River Inter-Tribal Fish Commission   |
| 4:55–5:10 PM | <b>Concluding comments and wrap-up</b><br>Moderator  |
| 5:30–PM      | <b>STUDENT MIXER at Goody's!! See attached map.</b>  |

---

## Thursday, March 4 (concurrent sessions)

6:00–7:00 AM

### ***ICAFS Spawning Run***

|           |   |  |
|-----------|---|--|
|           | <b>Session 2-A: Restoration</b><br>Moderator: Stephanie Hallock   | <b>Session 2-B: Anadromous Fish ecology and management</b><br>Moderator: Danielle Dorsch   |
|           | Location: TBA   | Location: TBA  |
| 8:00–8:10 | Announcements and introduction to Session   | Announcements and introduction to Session  |
| 8:10–8:30 | <b>Restoration within the Rainier reach of the upper Teton River</b><br>Tamara Sperber, Teton Regional Land Trust             | <b>Rogues in the river: how spill and flow influence estimation of migration survival in three stocks of Snake River anadromous salmonids</b><br>James Morrow, National Marine Fisheries Service   |
| 8:30–8:50 | <b>North Fork Coeur d'Alene River Basin Watershed restoration! How is recovery defined?</b><br>Edward Kider, Two-C Consulting | <b>Increasing water temperature and spawner abundance were associated with increased Chinook salmon female prespawn mortality in the South Fork Salmon River</b><br>William Young, Nez Perce Tribe |
| 8:50–9:10 | <b>Restoring an entrenched mountain meadow stream by emulating natural processes</b><br>Angelo Vitale, Coeur d'Alene Tribe    | <b>Characteristics of steelhead kelts in the Snake River</b><br>Jessica Buelow, University of Idaho  |

---



|             |   |   |
|-------------|---|---|
| 9:10–9:30   | <b>Bonneville cutthroat trout restoration in a Bear Lake tributary – a top to bottom approach</b><br>Arnie Brimmer, Idaho Department of Fish and Game   | <b>Quantifying the effects of Snake River dam operations on the collection and detection of subyearling fall Chinook salmon</b><br>John M. Plumb, University of Idaho                       |
| 9:30–9:50   | <b>Restoring connectivity to spawning and rearing habitat for Chinook salmon (<i>Oncorhynchus tshawytscha</i>) in the Pahsimeroi River, ID</b><br>Patrick Murphy, Idaho Department of Fish and Game | <b>Influence of seaward migration and ocean/climatic conditions on survival rates of Snake River Chinook salmon and steelhead</b><br>Charles E. Petrosky, Idaho Department of Fish and Game |
| 9:50–10:15  | <b>BREAK</b>  |   |
|             | <b>Session 3-A: Aquatic Ecology</b><br>Moderator: Tony Lamansky   | <b>Session 3-B: Habitat modeling and assessment</b><br>Moderator: TBA   |
|             | Location: TBA   | Location: TBA   |
| 10:15–10:20 | <b>Introduction to Session</b>  | <b>Introduction to Session</b>  |
| 10:20–10:40 | <b>Riparian insect response to experimental salmon carcass additions to Idaho streams</b><br>Scott Collins, Idaho State University  | <b>Seasons other than summer: the need for collecting annual stream temperature</b><br>Dona Horan, US Forest Service  |
| 10:40–11:00 | <b>Idaho's freshwater mussels – their distribution, biology, and status</b><br>Cynthia Tait, US Forest Service  | <b>GIS tools to assess the risks and benefits of barrier removal to native fish populations in Idaho</b><br>Paul Reyes, University of Idaho   |
| 11:00–11:20 | <b>Does replacement of a native salmonid by a nonnative reduce subsidies to riparian consumers?</b><br>Joseph Benjamin, Idaho State University  | <b>Habitat model for predicting the upstream extent of fish occurrence based on GIS data: an Idaho pilot study</b><br>Chris Tretter, Idaho Department of Lands                              |
| 11:20–11:40 | <b>Development of biosecurity measures for hatcheries to protect against invasive mollusks</b><br>Kelly Stockton, University of Idaho   | <b>Quantifying temporal variability in stream habitat data: implications for restoration and monitoring</b><br>Robert Al-Chokhachy, US Forest Service                                       |
| 11:40–12:00 | <b>The function of floodplain vs. confined segments in an Idaho river network: organic matter dynamics and invertebrate production</b><br>Ryan Bellmore, Idaho State University                     | <b>Evaluating watershed condition: bottom up vs. top down approaches?</b><br>Eric Archer, US Forest Service   |

12:00—2:15

**BUSINESS LUNCHEON****Location: Bannock and Bonneville rooms****Session 4: Fisheries Management****Moderator: Greg Schoby**

Location: Caribou Room

2:15—2:20

**Introduction to Session**

2:20—2:40

**Mentoring within Idaho Chapter AFS: an open discussion**

Steven Elle, Idaho Department of Fish and Game

2:40—3:00

**Evaluation and adaptation of a non-native brook trout suppression program in a watershed of the Coeur d'Alene basin**

Jon Firehammer, Coeur d'Alene Tribe

3:00—3:20

**Validation of scales and otoliths for estimating age of redband trout in high desert stream of Idaho**

Dan Schill, Idaho Department of Fish and Game, University of Idaho

3:20—3:40

**Relative performance of diploid and triploid catchable rainbow trout in lowland lakes and reservoirs**

Martin Koenig, Idaho Department of Fish and Game

3:40—4:00

**Hooking mortality and landing success with baited circle hooks compared to traditional types for stream-dwelling trout**

Brett High, Idaho Department of Fish and Game

4:00—4:20

**Don't move a mussel – news from Idaho's invasive species program**

Amy Ferriter, Idaho State Department of Agriculture

4:20—4:40

**Caribou Room - Poster Session Speed Presentations!****Speed Presentations (3 minutes each):****Moderator: Steve Elle**

Speed Presentation

**Putting aquatic science in to practice**

Kerry Overton, Presenter, USFS Rocky Mountain Research Station's Boise Aquatic Sciences Lab,

Speed Presentation

**Mountain whitefish rehabilitation in response to nutrient restoration in the Kootenai River, Idaho**Cathy A. Gidley  
Idaho Department of Fish and Game

Speed Presentation

**2nd Annual Western Division Student Colloquium**

Kelly Stockton, University of Idaho

Speed Presentation

**Angler exploitation of redband trout in eight Idaho desert streams**

Dan Schill, Idaho Fish and Game/Univ of Idaho

Speed Presentation

**Save money by building or refurbishing your Smith-Root backpack electrofishers 24 volt batteries**

Corey Lyman, Caribou-Targhee National Forest

4:40 – 5:30

**POSTER SESSION (location: Indoor Patio area)****The distribution of genetic variation among Chinook salmon lineages in the Columbia River Basin: a landscape genetics perspective**

Andrew Matala, Columbia River Inter-Tribal Fish Commission

---

**Efficacy of Virkon Aquatic® to disinfect wading gear infested with New Zealand mudsnails**

Amber Barenberg, University of Idaho

**Predicting spawning ground occupancy and assessing spawning habitat selection by Chinook salmon (*Oncorhynchus tshawytscha*) in a central Idaho wilderness stream**

Ellen J. Hamann, University of Idaho

**Relative genetic diversity estimates amongst four Pacific salmonids**

Nathan Campbell, Columbia River Inter-Tribal Fish Commission

**Modeling the effect of pelican predation on Yellowstone cutthroat trout in the upper Blackfoot River system**

Matt Green, Idaho State University

**Application of new spatial statistical stream models for precise downscaling of climate change effects on temperatures in river networks**

Dona Horan, Rocky Mountain Research Station

**Characterization of an attenuated *flavobacterium psychrophilum* vaccine**

Tarah Johnson, University of Idaho

**Burbot extensive rearing - exploring short term solutions for burbot rehabilitation in the Kootenai River**

Corie Laude, Idaho Department of Fish and Game

**Genetic stock identification of steelhead kelts in the Yakima River Basin**

Jeff Stephenson, Columbia River Inter-Tribal Fish Commission

**Evidence of iteroparity in wild Snake River summer-run steelhead (*Oncorhynchus mykiss*) from scale patterns**

Kristin Ellsworth, Idaho Dept of Fish and Game

**Studying the effects of environmental variables on the seaward migration of juvenile Chinook salmon (*Oncorhynchus tshawytscha*) in Big Creek Idaho, – A comparative analysis across multiple sites and years**

Kristen Pilcher, University of Idaho

**A non-parametric assessment of Snake River fall Chinook salmon (*Oncorhynchus tshawytscha*) out-migration timing**

John M. Plumb, Presenter, University of Idaho

**Using bioenergetic models to estimate changes in habitat quality for stream-dwelling salmonids: implications for climate change and nutrient supplementation**

Steven Campbell, Idaho State University

6:00—?? PM

**EVENING SOCIAL AND AUCTION!**

---



## Upcoming Events

### Western Division — American Fisheries Society, Annual Meeting

#### The Future of Aquatic Resources in the West: Science, Management, and Politics

Salt Lake City, Utah - April 19 – 23

For details go to: <http://utahafs.org/wdafs2010/>

### ICAFS EXCOM AND COMMITTEE CHAIRS

#### Executive Committee

|                                       |                |  |
|---------------------------------------|----------------|--|
| Jim Fredericks, President             | (208) 769-1414 | <a href="mailto:jim.fredericks@idfg.idaho.gov">jim.fredericks@idfg.idaho.gov</a>       |
| Ernest Keeley, President Elect        | (208) 282-3145 | <a href="mailto:keelerne@isu.edu">keelerne@isu.edu</a>                                 |
| Jason Vogel, Vice President           | (208) 843-7145 | <a href="mailto:jasonv@nezperce.org">jasonv@nezperce.org</a>                           |
| Bart Gamett, Past President           | (208) 588-2224 | <a href="mailto:bgamett@fs.fed.us">bgamett@fs.fed.us</a>                               |
| Mick Hoover, Secretary                | (208) 588-2219 | <a href="mailto:mick.hoover@idfg.idaho.gov">mick.hoover@idfg.idaho.gov</a>             |
| Chris Kozfkay, Treasurer              | (208) 939-6713 | <a href="mailto:christine.kozfkay@idfg.idaho.gov">christine.kozfkay@idfg.idaho.gov</a> |
| Martin Koenig, Nominations Chair      | (208) 465-8404 | <a href="mailto:martin.koenig@idfg.idaho.gov">martin.koenig@idfg.idaho.gov</a>         |
| Tarah Johnson, Palouse Unit President | (208) 691-5485 | <a href="mailto:john3002@vandals.uidaho.edu">john3002@vandals.uidaho.edu</a>           |
| Sam Matsaw, Portneuf Unit President   | (208) 282-4458 | <a href="mailto:matssamm@isu.edu">matssamm@isu.edu</a>                                 |

#### Committee Chairs

|   |                |  |
|---|----------------|--|
| Tim Copeland, Anadromous Fish               | (208) 465-8404 | <a href="mailto:tim.copeland@idfg.idaho.gov">tim.copeland@idfg.idaho.gov</a>           |
| Bryan Grant, Aquaculture                    | (208) 427-6364 | <a href="mailto:bryan.grant@idfg.idaho.gov">bryan.grant@idfg.idaho.gov</a>             |
| Eric Stark, Fundraising                     | (208) 465-8404 | <a href="mailto:eric.stark@idfg.idaho.gov">eric.stark@idfg.idaho.gov</a>               |
| John Cassinelli, Fundraising                | (208) 465-8404 | <a href="mailto:john.cassinelli@idfg.idaho.gov">john.cassinelli@idfg.idaho.gov</a>     |
| Matt Dare, Membership                       | (208) 373-4371 | <a href="mailto:mdare@fs.fed.us">mdare@fs.fed.us</a>                                   |
| Steve Elle, Mentoring                       | (208) 465-8404 | <a href="mailto:steve.elle@idfg.idaho.gov">steve.elle@idfg.idaho.gov</a>               |
| Vaughn Paragamian, Native Fishes            | (208) 769-1414 | <a href="mailto:vaughn.paragamian@idfg.idaho.gov">vaughn.paragamian@idfg.idaho.gov</a> |
| Lauri Monnot, Public Education              | (208) 373-0461 | <a href="mailto:lauri.monnot@deg.idaho.gov">lauri.monnot@deg.idaho.gov</a>             |
| Corey Lyman, Riparian                       | (208) 557-5838 | <a href="mailto:clyman@fs.fed.us">clyman@fs.fed.us</a>                                 |
| Stephanie Hallock, Water Quality/Str. Hydr. | (208) 686-0701 | <a href="mailto:shallock@cdatribe-nsn.gov">shallock@cdatribe-nsn.gov</a>               |